

Applications

The Model FPC-1 Field PC is a rugged, handheld, easy-to-use instrument used for reading...

- Inclinator Probes (GK-604D)
- Portable MEMS Tiltmeters (6101D)
- Vibrating Wire Sensors (GK-405)
- Addressable Thermistor Strings (3810A)



- Model GK-405 Vibrating Wire Readout, with FPC-1 placed in dock, used to read VW sensors.



- Model FPC-1 shown with the Model GK-604D Digital Inclinometer System.



- Model FPC-1 Field PC with screen showing Vibrating Wire Output.

Overview

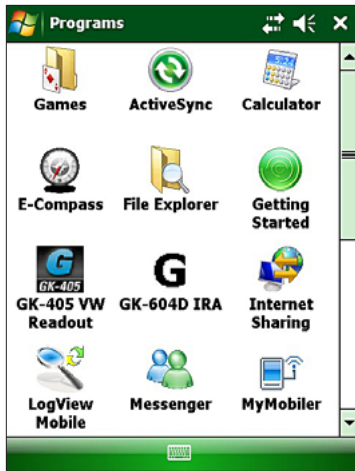
The Model FPC-1 Field PC is a rugged, handheld, easy-to-use instrument for reading Digital Inclinometer Probes and Tiltmeters (in the GK-604D) and VW Sensors (in the GK-405). It's a standalone device for reading the Model 3810A Addressable Thermistor Strings and the Model 6101D Portable Digital MEMS Tiltmeter. It can also be used to take compass bearings (with Inclinometer Probes) and to program and retrieve data from the Model 8002 (LC-2) Series Dataloggers using LogView Mobile software—a particularly useful option in harsh environments that are too extreme for a typical laptop PC.

The FPC-1 features a 3.5-inch VGA touch screen display and a numeric keypad. It offers an 806 MHz Xscale processor, with 128 MB of onboard RAM, 4 GB of Flash storage and a 5600 mAh Li-ion battery that will operate up to 12 hours on a single charge. It also includes an integrated SiRF Star III GPS, short-range wireless PAN

and 802.11b/g WLAN functionality, and a built-in 3-megapixel camera with autofocus and LED flash.

The FPC-1 has an IP67 rating, is impervious to both dust and water and is resistant to shocks, vibration and operating temperatures from -30°C to $+60^{\circ}\text{C}$. It weighs just 490 grams (1.08 pounds) and is compact enough to operate in one hand.

The FPC-1 is supplied complete with a hand strap, stylus, USB sync cable, Lithium-Ion battery, AC wall charger (with international plug kit), screen protector, and Quick Start Guide.



● Screen shot showing main menu and installed programs on the Model FPC-1.



● Model FPC-1 showing LogView Mobile Datalogging and Monitoring screen.

Technical Specifications

Processor	Marvell PXA310 806 MHz
Memory	128 MB SDRAM
Data Storage	4 GB iNAND Flash
Operating System	Microsoft® Windows® Mobile 6.1 Professional
Screen	480 x 640 pixel Anti-glare 3.5" VGA resolution, touchscreen, sunlight readable 262K colors (18 bit), with LED backlight
Keypad	Numeric keypad with backlighting, on-screen QWERTY keyboard
Connections	1 x USB host and client (Mini AB USB OTG, 1.2 host, 2.0 client), Power jack, 1 x SDIO slot, 9-pin serial RS-232 connector
Communication	Ubiquitous short-range wireless PAN, WLAN: Integrated 802.11 b/g supports AES, TKIP, WEP, WPA and WPA2, GSM/UMTS (HSDPA/EDGE), integrated speaker and microphone with noise cancellation
Navigation	Integrated GPS SiRF Star III chipset with WAAS/EGNOS support, Integrated E-Compass and G-Sensor, Integrated Altimeter
Camera	Integrated 3 megapixel camera with autofocus and LED Flash
Drop	MIL-STD-810G, Method 516.5, Procedure IV 26 drops from 1.22 m, 6 additional drops at -30°C, 6 additional drops at 60°C
Vibration	MIL-STD-810G, Method 514.5 Procedure I
Sand and Dust:	IP67, IEC-529 Dust: MIL-STD-810G, Method 516.5, Procedure IV
Water	IP67, IEC 529 MIL-STD-810G, Method 512.4, Procedure I, Water Jet 12.5 mm diameter @ 2.5 - 3 m, 100 Liter/minute
Humidity	MIL-STD-810G, Method 507.4, 90% RH temp cycle 30-60°C
Altitude	4572 m, MIL-STD-810G, Method 500.4, Procedures I, II & III
Battery	5600 mAh Li-ion battery pack
Operating Temperature	-30 °C to 60 °C, MIL-STD 810G, Method 501.4, Procedure II, Method 502.4, Procedure I, II & III
Storage Temperature	-40 °C to 70 °C
Temperature Shock	MIL-STD-810G, Method 503.4, Procedure I (-40 °C / 70 °C)
Weight	490 g, including rechargeable battery
L x W x H	179 x 97 x 37 mm



The World Leader in Vibrating Wire Technology™

Geokon, Incorporated
48 Spencer Street
Lebanon, NH 03766
USA

Geokon maintains an ongoing policy of design review and reserves the right to amend products and specifications without notice.

☎ 1 • 603 • 448 • 1562
☎ 1 • 603 • 448 • 3216
✉ geokon@geokon.com
🌐 www.geokon.com

©2015 Geokon, Incorporated. All Rights Reserved | Doc. Rev. Init. 02/15