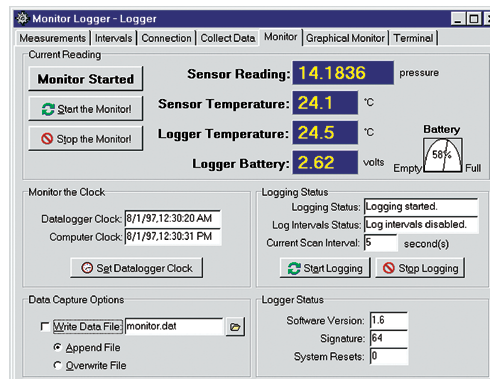


### Software: LC-2, LC-2A

LogWare Software simplifies the task of configuration, communication, monitoring, data collection and data reduction using the Geokon LC-2 or LC-2A. The software is a multiple document interface (MDI) type application designed for Windows® (compatible with Windows® 95, 98, NT, XP, XP Pro and Vista).

The configuration, data collection and monitoring form includes a screen for measurements, intervals, connection and data collection configuration, a real-time text based monitor, a graphical monitor and terminal emulator. The data reduction form includes a data file editor, Excel® compatible spreadsheet and charting component.



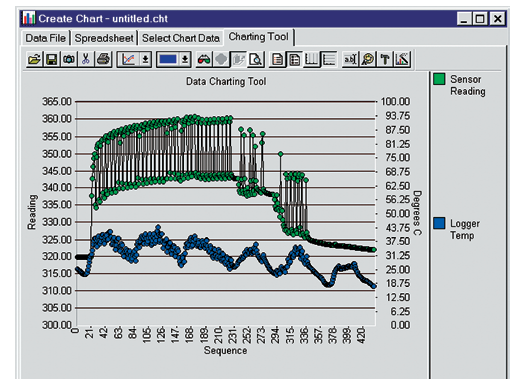
• LogWare screen: "Monitor Logger."

The spreadsheet can load and save Excel® files as well as create HTML tables for use on the Web. The charting component includes over 40 different types and varieties of charts.

The charting and spreadsheet components are Windows® OLE compliant allowing easy "cut-and-paste" operations between the screens of LogWare and other applications such as spreadsheet and word processing software.

### Software: LC-2x4, LC-2x16

For the LC-2x4 and LC-2x16, datalogger configuration and control is accomplished through a simple terminal emulator program such as HyperTerminal for Windows®, or equivalent. Stored data is easily formatted for spreadsheet analysis.



• LogWare screen: "Create Chart."

DISCONTINUED

### System Requirements

	LogWare Software (for use with LC-2 and LC-2A only)
Processor Requirements	486 running at 25 MHz (minimum) Pentium®/Pentium Pro/Pentium II (or equivalent) or higher running at 166 MHz or better (recommended)
Memory Requirements	8 MB (minimum), 32 MB or more (recommended)
Hard Disk Requirements	12 MB (minimum), 20 MB or more (recommended)



Geokon, Incorporated  
48 Spencer Street  
Lebanon, NH 03766  
USA

1-603-448-1562  
1-603-448-3216  
geokon@geokon.com  
www.geokon.com

