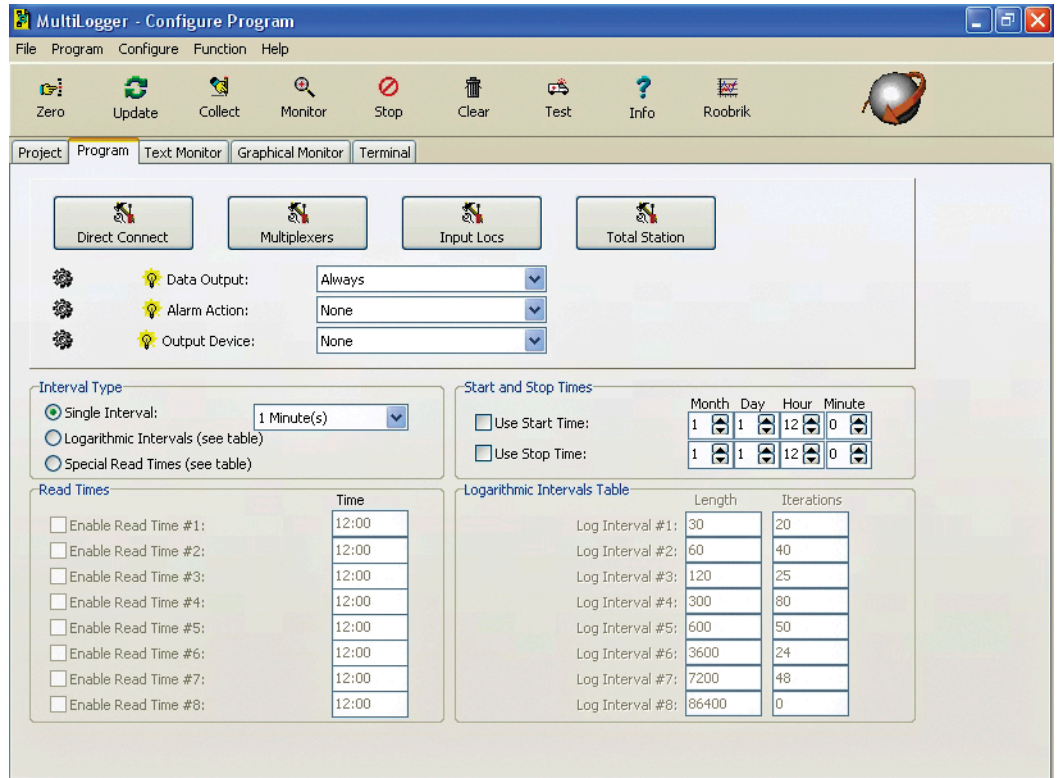


MultiLogger Suite Software

Key Features

- Designed for Windows® 7, Vista, XP, Server 2008 and Server 2003
- Easy to learn and use Graphical User Interface (GUI)
- Comprehensive context-sensitive help system and documentation
- Extensive program generation options
- Extensive user customization options
- Built-in alarm limit entry and monitoring
- Real-time monitoring capabilities using text and graphs (up to 4)
- Program modes such as Zero and Test to help with installation and troubleshooting
- Support for communication peripherals, TCP/IP Ethernet terminal servers and spread spectrum wireless
- Includes integrated SQL database technology to manage data, build a powerful project interface including reporting, alarms and notification, and provide access to your project via the Internet



• MultiLogger Configure Program screen.

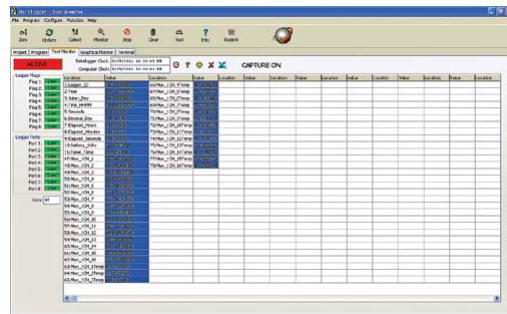
Program Function

MultiLogger is designed to get Geokon's data acquisition systems up and running in a matter of minutes while still retaining the power and flexibility of the Campbell Scientific CR1000 and CR800 Controllers.

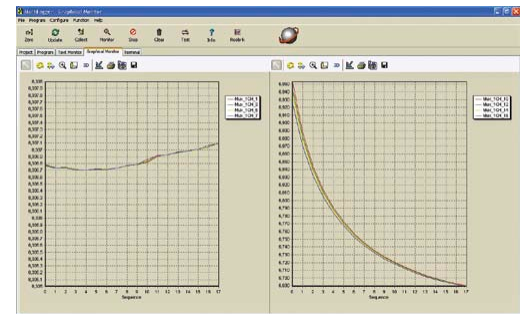
The program, which operates the datalogging system, is created based on the options selected. These options include interval types and channel configuration and whether instruments are connected directly to the wiring panel of the Controller or through multiplexers.

Each measurement channel can be configured for instrument type and programmed to output temperature corrected data in engineering units. Alarm limits can also be specified. MultiLogger includes two support programs, MLSetup for adding measurement types, conversions and/or alarms, and MLEditor for editing the programming of the new or existing options.

MultiLogger communicates with the Controller via direct connection, phone modem or other communication peripherals to download the program, monitor the system (using a text and/or graphical monitor) and collect data. Collected data may be stored in an ASCII file or Excel compatible worksheet. Other communication peripherals are also supported including TCP/IP Ethernet terminal servers and spread spectrum wireless transceivers. Custom communication devices may also be supported by using the communication device scripting feature of the software.



● Figure 1: Text Monitor screen.



● Figure 2: Graphical Monitor screen.

Channel Configuration

The Channel Configuration form configures instruments connected directly to the wiring panel of the Controller or via multiplexers. In addition you may also display descriptive help for the particular sensor selected as well as edit the extended parameters for each channel. Extended parameters refer to special processing that is done such as summing measurements from multiple channels. MLSetup and MLEditor can be used to add custom gage types and conversion units.

Text and Graphical Monitor

The Text Monitor screen is depicted in Figure 1. Up to 2000 locations may be monitored. The Graphical Monitor screen is shown in Figure 2. Monitor data may also be captured to disk.

Database/Web Integration

MultiLogger Suite comprises a suite of software components that include data acquisition system management, data collection automation, integrated database data import automation (includes SQL database technology using the open-source Firebird SQL Server), database management including data and project management tools, graphical database interface, numerous types of charts and reports supporting all commonly used geotechnical instrumentation, automated notifications including alarms and scheduled reporting, and secure web data interface.

The secure web data interface (MLWeb) provides for logging into the database via the Internet, viewing the status of data, entering/modifying data and creating any of the charts and/or reports that have been

configured in the database. MLWeb runs on Microsoft's Internet Information Services (IIS) which is available for any of the Windows® Server platforms as well as professional versions of the Microsoft® workstation Operating Systems, such as Windows® XP or Windows® 7.

System Software Licensing

The database system software included in the MultiLogger Suite package, along with secure web data interface, includes a 50 element, or instrument, license. Additional licensing is available to expand the use of the database/web components for larger projects.

System Requirements

MultiLogger Suite is designed to run on Microsoft® Windows® 7, Vista, XP, Server 2008 and Server 2003 operating systems.

Minimum System Resources

Processor	1 GHz
Memory	1 GB
Hard Disk	10 GB

Recommended System Resources

Operating System	Windows® 7 Professional (32-bit) ¹
Memory	2 GB
Hard Drive	10 GB

Recommended System Resources: Server

Operating System	Microsoft® Server 2008 Standard (32-bit) ¹
Memory	4 GB
Hard Drive	20 GB

¹Compatible with 64-bit versions of these operating systems.



Geokon, Incorporated
48 Spencer Street
Lebanon, NH 03766
USA

☎ 1 • 603 • 448 • 1562
☎ 1 • 603 • 448 • 3216
✉ geokon@geokon.com
🌐 www.geokon.com