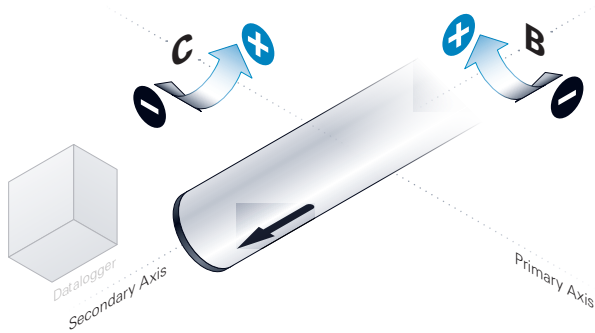


3-AXIS TILT SENSOR INSTALLATION & ORIENTATION

CEILING MOUNT: ARROW POINTED LEFT



SENSOR CONFIGURATION

- Mounted to **CEILING**, **HORIZONTAL** installation
- **DATALOGGER** positioned **LEFT**, relative to sensor

SENSOR ORIENTATION

- Sensor **ARROW** pointed **LEFT**, facing **DOWN**

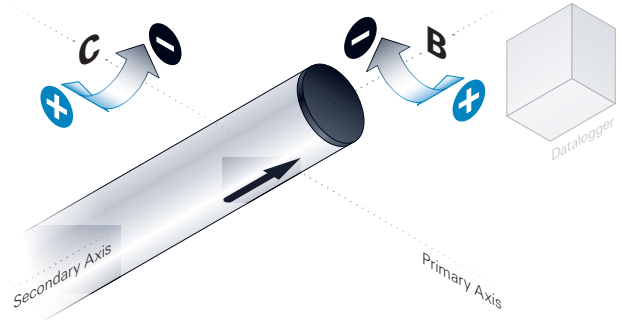
PRIMARY AXIS C

- **AXIS C POSITIVE/NEGATIVE ROTATION** readings:
 - ⊕ Counterclockwise
 - ⊖ Clockwise

SECONDARY AXIS B

- **AXIS B POSITIVE/NEGATIVE ROTATION** readings:
 - ⊕ Top Away
 - ⊖ Top Toward

CEILING MOUNT: ARROW POINTED RIGHT



SENSOR CONFIGURATION

- Mounted to **CEILING**, **HORIZONTAL** installation
- **DATALOGGER** positioned **RIGHT**, relative to sensor

SENSOR ORIENTATION

- Sensor **ARROW** pointed **RIGHT**, facing **DOWN**

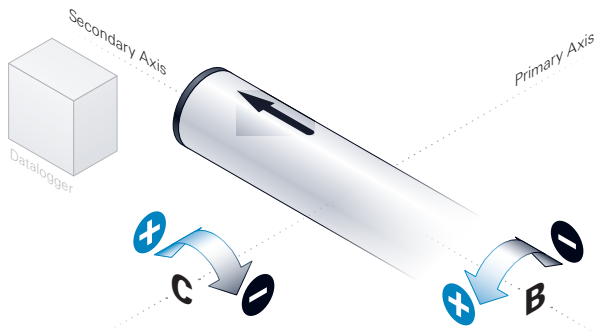
PRIMARY AXIS C

- **AXIS C POSITIVE/NEGATIVE ROTATION** readings:
 - ⊕ Clockwise
 - ⊖ Counterclockwise

SECONDARY AXIS B

- **AXIS B POSITIVE/NEGATIVE ROTATION** readings:
 - ⊕ Top Toward
 - ⊖ Top Away

FLOOR MOUNT: ARROW POINTED LEFT



SENSOR CONFIGURATION

- Mounted to **FLOOR**, **HORIZONTAL** installation
- **DATALOGGER** positioned **LEFT**, relative to sensor

SENSOR ORIENTATION

- Sensor **ARROW** pointed **LEFT**, facing **UP**

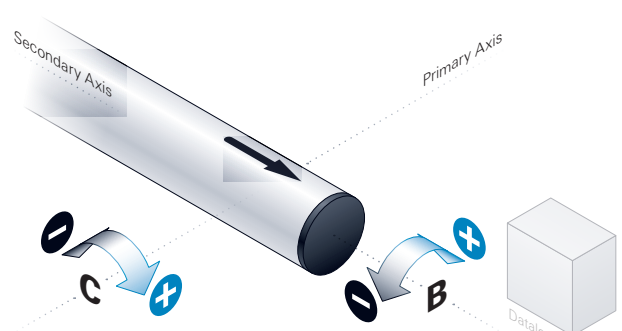
PRIMARY AXIS C

- **AXIS C POSITIVE/NEGATIVE ROTATION** readings:
 - ⊕ Counterclockwise
 - ⊖ Clockwise

SECONDARY AXIS B

- **AXIS B POSITIVE/NEGATIVE ROTATION** readings:
 - ⊕ Top Toward
 - ⊖ Top Away

FLOOR MOUNT: ARROW POINTED RIGHT



SENSOR CONFIGURATION

- Mounted to **FLOOR**, **HORIZONTAL** installation
- **DATALOGGER** positioned **RIGHT**, relative to sensor

SENSOR ORIENTATION

- Sensor **ARROW** pointed **RIGHT**, facing **UP**

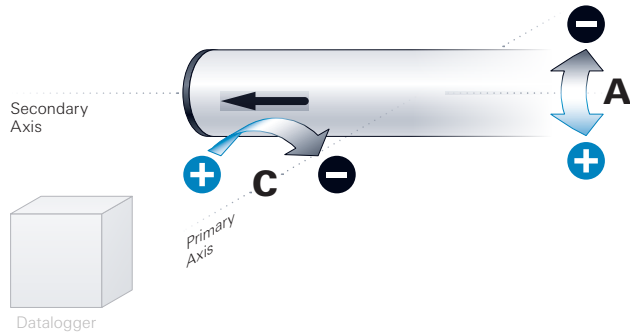
PRIMARY AXIS C

- **AXIS C POSITIVE/NEGATIVE ROTATION** readings:
 - ⊕ Clockwise
 - ⊖ Counterclockwise

SECONDARY AXIS B

- **AXIS B POSITIVE/NEGATIVE ROTATION** readings:
 - ⊕ Top Away
 - ⊖ Top Toward

WALL MOUNT: ARROW POINTED LEFT



SENSOR CONFIGURATION

- Mounted to **WALL**, **HORIZONTAL** installation
- DATALOGGER** positioned **LEFT**, relative to sensor

SENSOR ORIENTATION

- Sensor **ARROW** pointed **LEFT**, facing **FRONT**

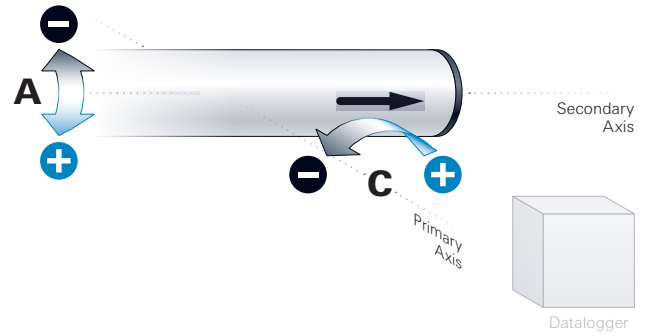
PRIMARY AXIS C

- AXIS C POSITIVE/NEGATIVE ROTATION** readings:
 - + Counterclockwise
 - Clockwise

SECONDARY AXIS A

- AXIS A POSITIVE/NEGATIVE ROTATION** readings:
 - + Top Toward
 - Top Away

WALL MOUNT: ARROW POINTED RIGHT



SENSOR CONFIGURATION

- Mounted to **WALL**, **HORIZONTAL** installation
- DATALOGGER** positioned **RIGHT**, relative to sensor

SENSOR ORIENTATION

- Sensor **ARROW** pointed **RIGHT**, facing **FRONT**

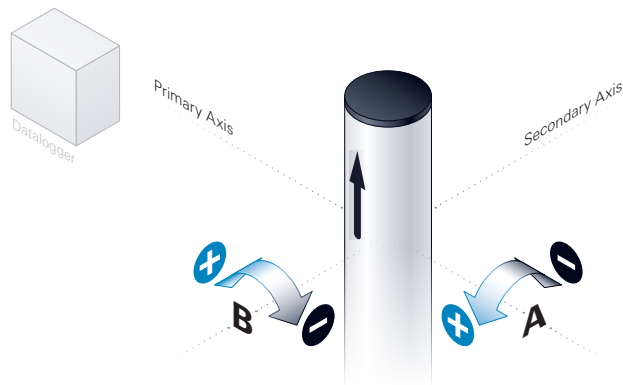
PRIMARY AXIS C

- AXIS C POSITIVE/NEGATIVE ROTATION** readings:
 - + Clockwise
 - Counterclockwise

SECONDARY AXIS A

- AXIS A POSITIVE/NEGATIVE ROTATION** readings:
 - + Top Toward
 - Top Away

WALL MOUNT: ARROW POINTED UP



SENSOR CONFIGURATION

- Mounted to **WALL**, **VERTICAL** installation
- DATALOGGER** positioned **ABOVE**, relative to sensor

SENSOR ORIENTATION

- Sensor **ARROW** pointed **UP**, facing **FRONT**

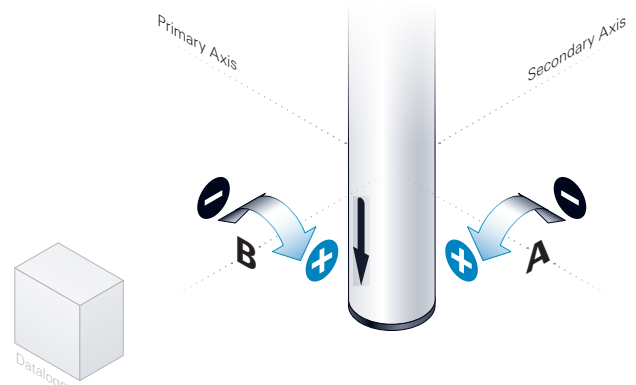
PRIMARY AXIS A

- AXIS A POSITIVE/NEGATIVE ROTATION** readings:
 - + Top Toward
 - Top Away

SECONDARY AXIS B

- AXIS B POSITIVE/NEGATIVE ROTATION** readings:
 - + Counterclockwise
 - Clockwise

WALL MOUNT: ARROW POINTED DOWN



SENSOR CONFIGURATION

- Mounted to **WALL**, **VERTICAL** installation
- DATALOGGER** positioned **BELOW**, relative to sensor

SENSOR ORIENTATION

- Sensor **ARROW** pointed **DOWN**, facing **FRONT**

PRIMARY AXIS A

- AXIS A POSITIVE/NEGATIVE ROTATION** readings:
 - + Top Toward
 - Top Away

SECONDARY AXIS B

- AXIS B POSITIVE/NEGATIVE ROTATION** readings:
 - + Clockwise
 - Counterclockwise