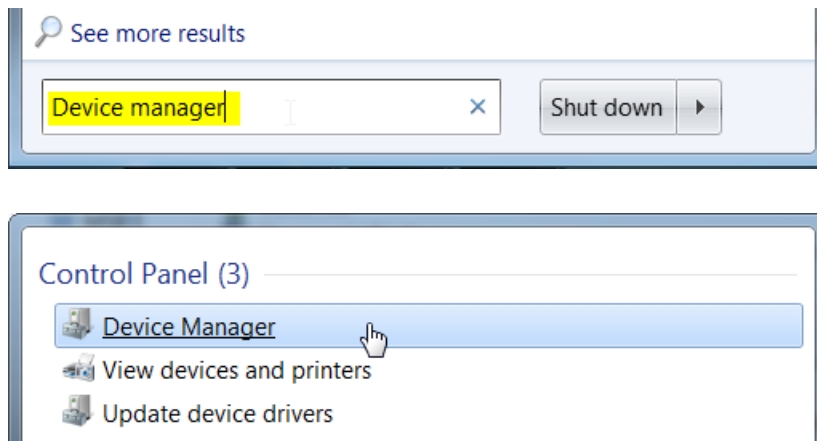
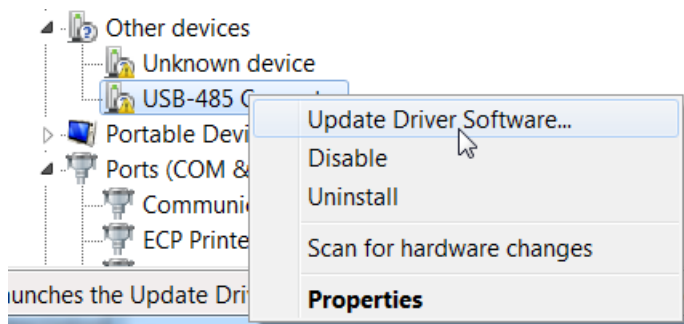


## Addressable Bus Converter Driver Installation Instructions

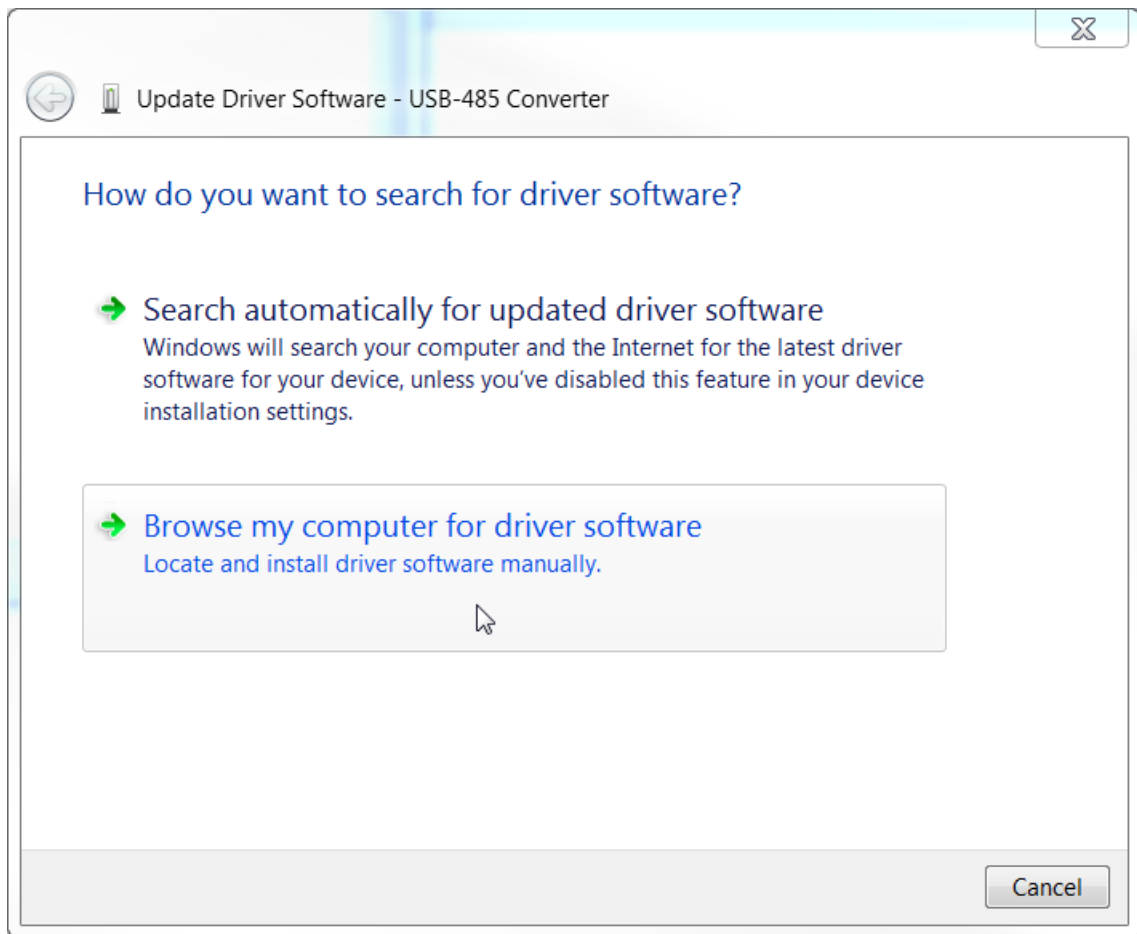
1. Download and unzip the driver package onto your PC.
2. Plug one end of the USB cable into the PC's USB port.
3. Plug the other end of the USB cable into the Addressable Bus Converter's USB port. If using Windows 10, the device is ready to use. Otherwise, proceed to step #4.
4. Open the Windows Device Manager by clicking on the Windows start menu button, typing "Device Manager" into the search bar, and then pressing 'Enter'.



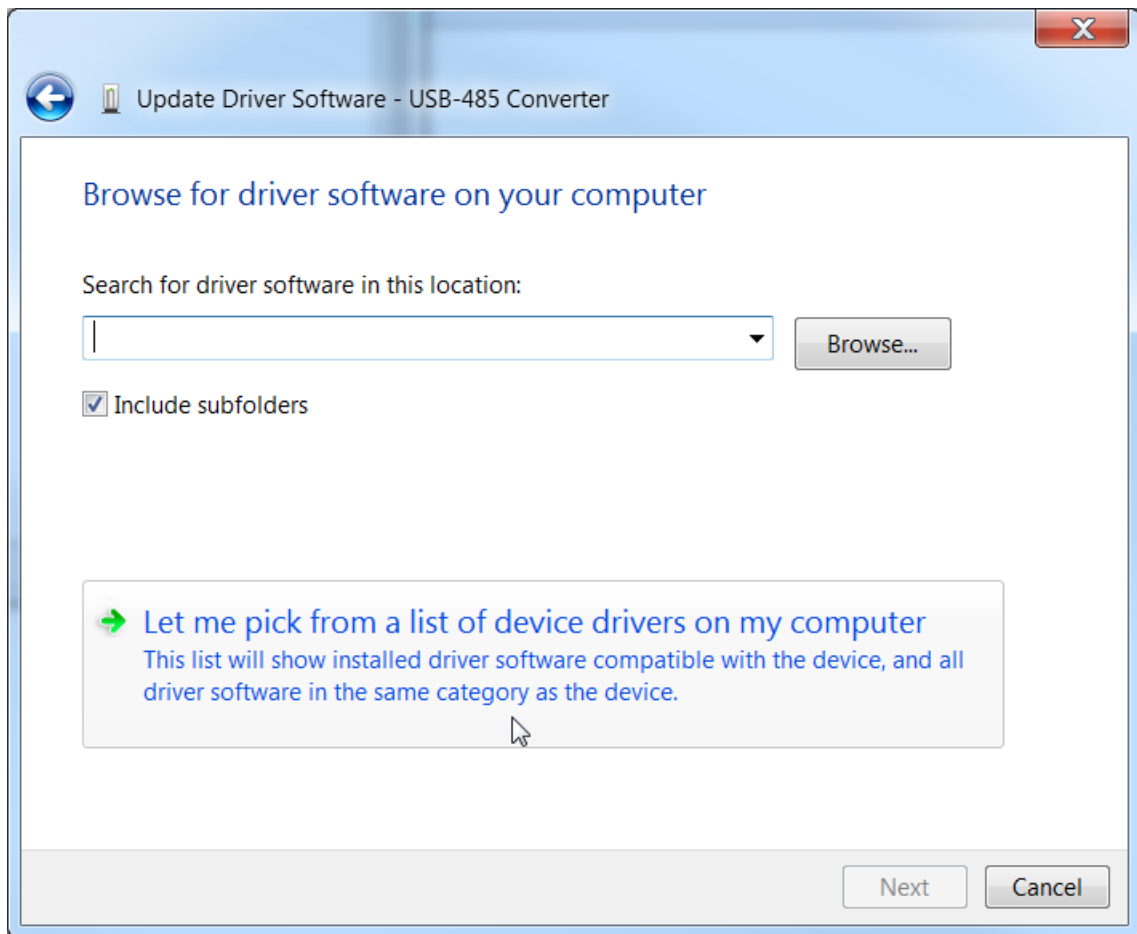
5. Expand the "Other devices" listing. "USB-485 Converter" should be one of the options. Right-click "USB-485 Converter" and select "Update Driver Software" menu item.



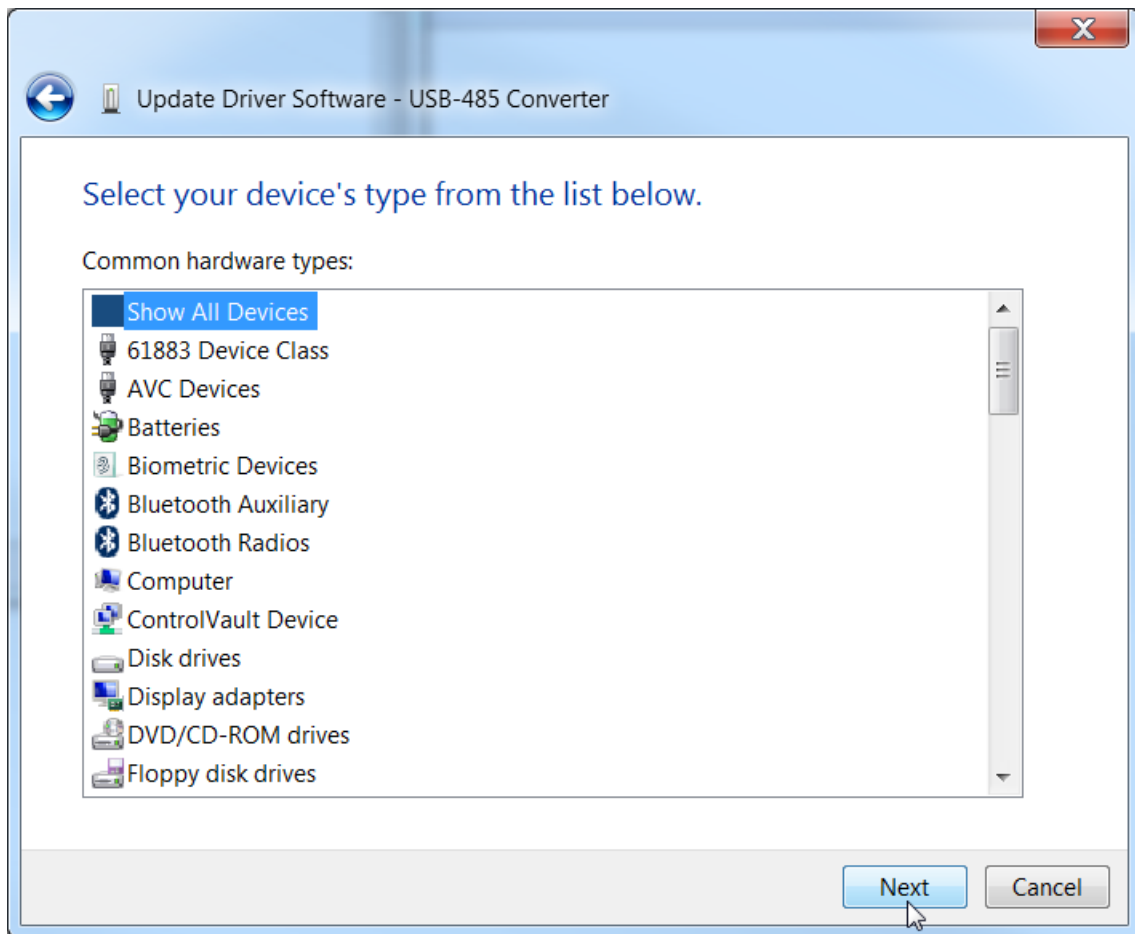
6. In the window that appears, select "Browse my computer for driver software".



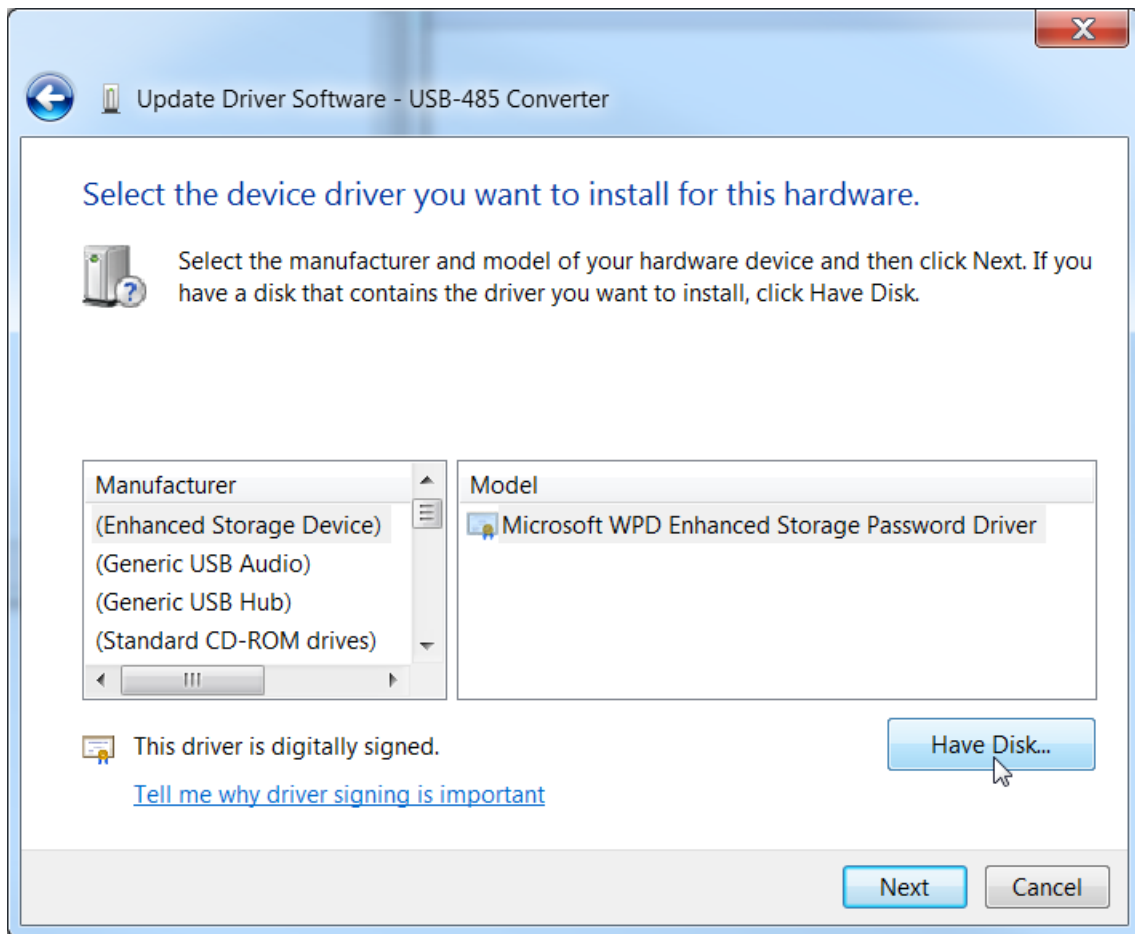
7. In the next window, select "Let me pick from a list of device drivers on my computer".



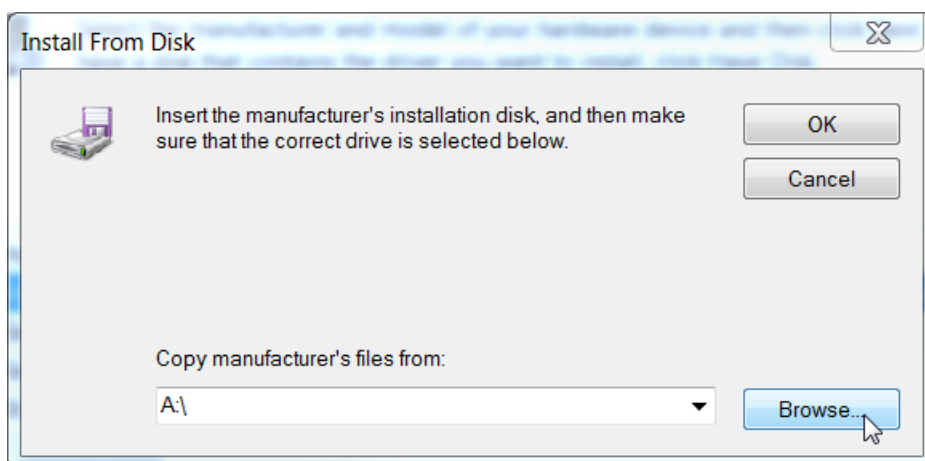
8. Click "Next".

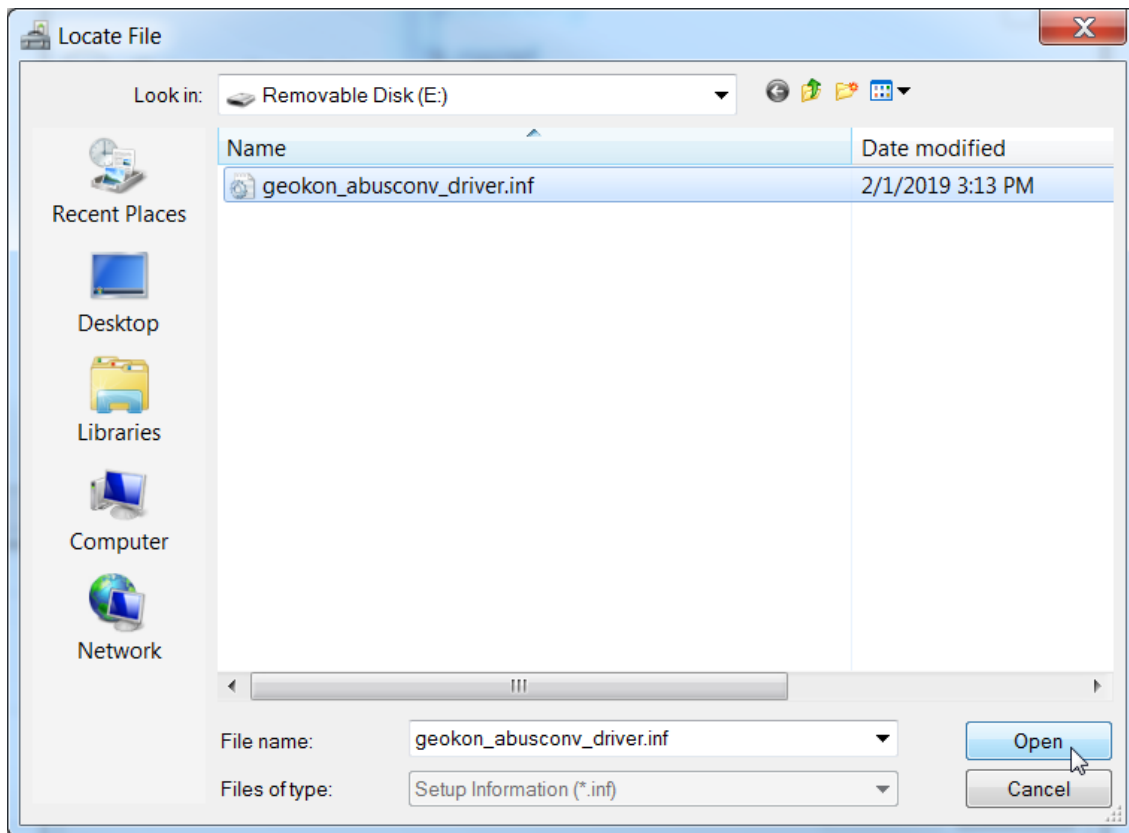


9. In the following window, select "Have Disk".

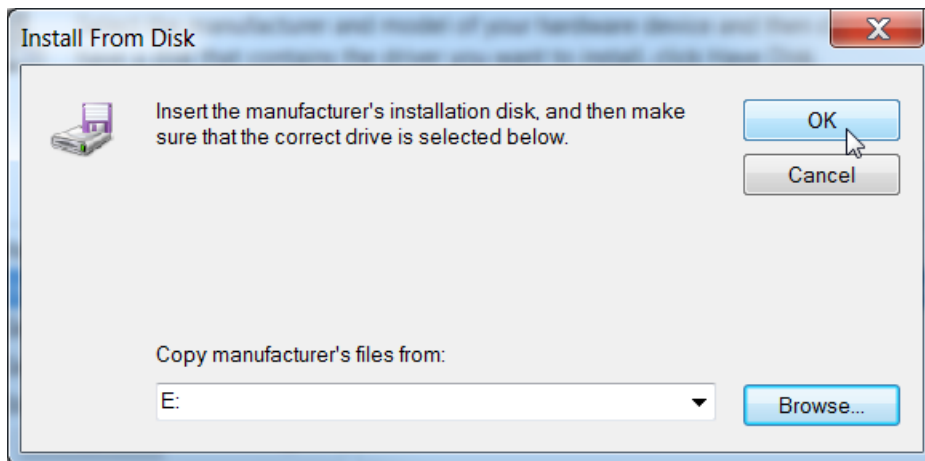


10. In the new "Install From Disk" window that appears, select "Browse". Direct it to the .inf file within the driver package and click "Open".

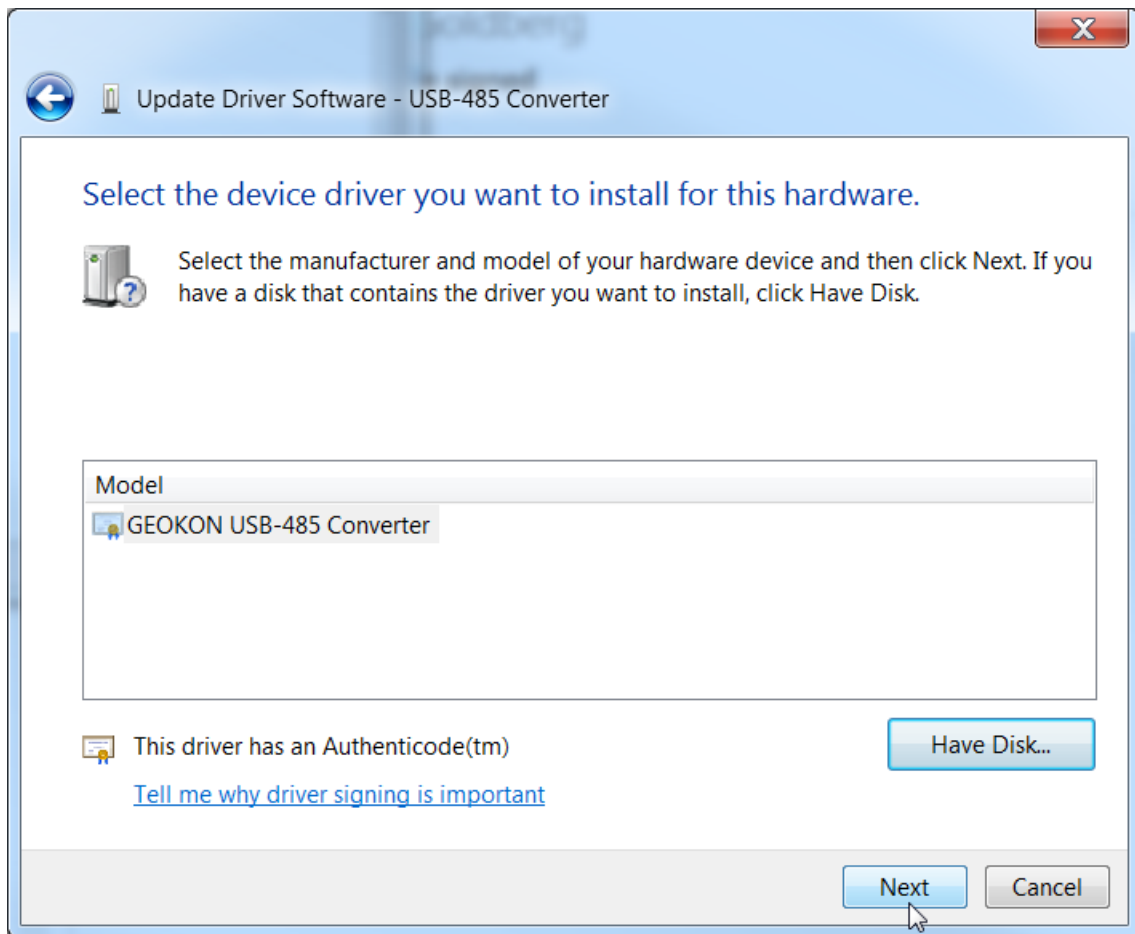




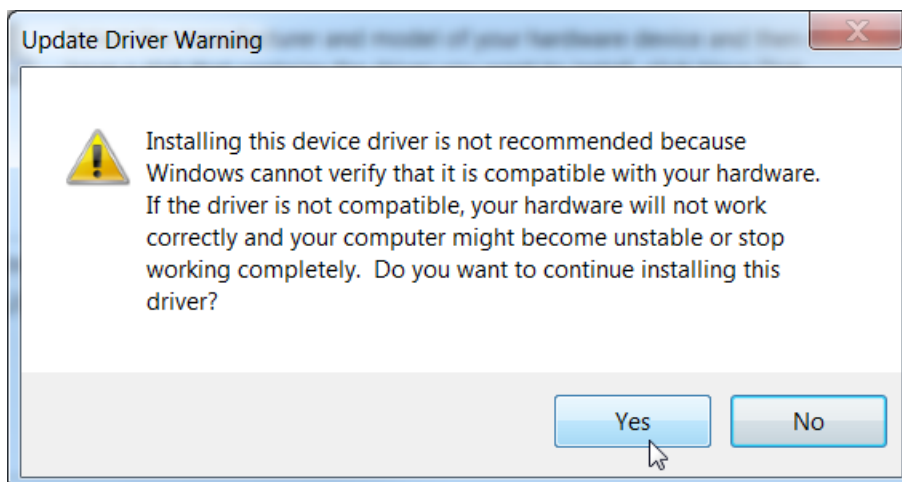
11. Back in the “Install From Disk” window, select “OK”.



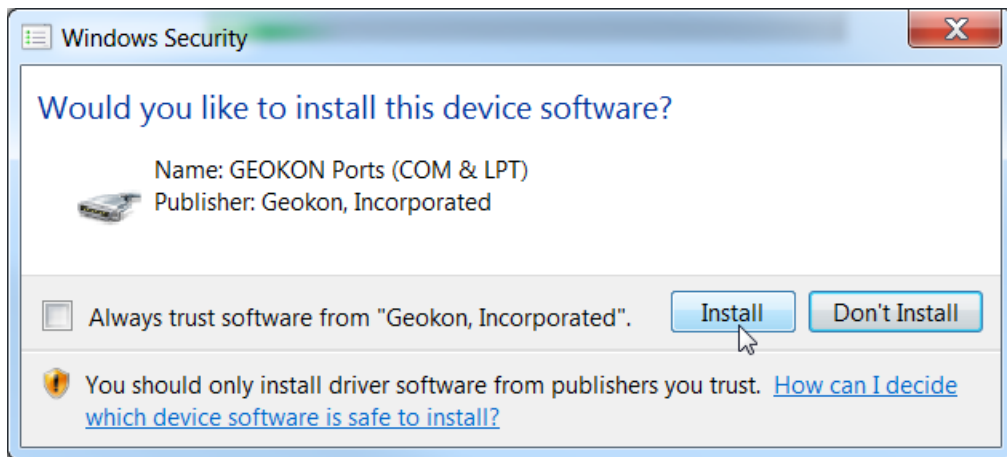
12. Click “Next”.



13. If an “Update Driver Warning” appears, click “Yes”.



14. In the “Windows Security” window that appears, click “Install”.



15. Finally, click "Close". Confirm in the Windows Device Manager that the Addressable Bus Converter appears under "Ports (COM & LPT)" as a "GEOKON USB-485 Converter".

